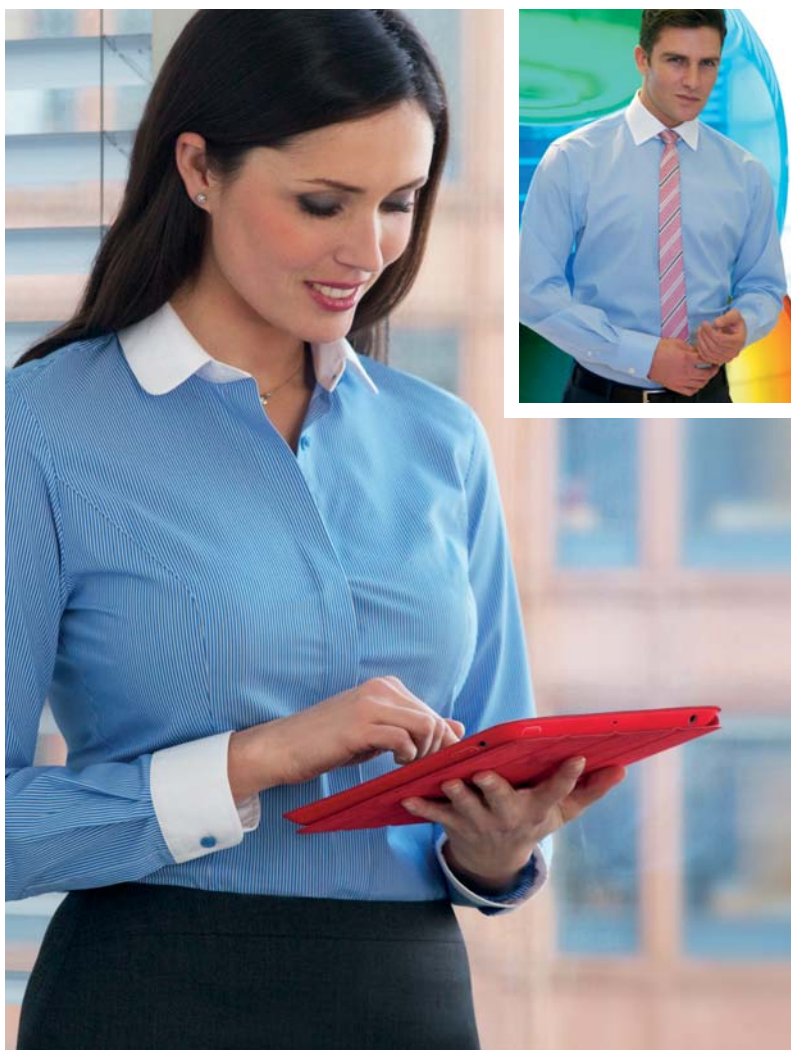


SHIRT & BLOUSE

collection



SHIRT & BLOUSE

collection

THE 22 PIECE SHIRT & BLOUSE COLLECTION OFFERS:

MEN'S

100% SUPERFINE COTTON

ANDORA Long Sleeve Shirt 04 - 05 - 06 - 07

100% COTTON POPLIN

CHELFORD Slim Fit, Long Sleeve Shirt 09

CHESTER Long Sleeve Shirt 08 - 10

CHEADLE Long Sleeve Shirt 08

STRETCH COTTON BLEND

LUCCA Long Sleeve Shirt 13 - 14 - 15

COTTON RICH

ALBA Slim Fit, Long Sleeve Shirt 16 - 17

RAPINO Long Sleeve Shirt 19

ROSELLO Short Sleeve Shirt 20 - 21

RUFINA Long Sleeve Shirt 23

ROCELLA Short Sleeve Shirt 24 - 25

MANTOVA Long Sleeve Shirt 26 - 57

SAVONA Short Sleeve Shirt 28

WOMEN'S

100% SUPERFINE COTTON

VILLETA Long Sleeve Blouse 05 - 06 - 07

OZZERO Short Sleeve Blouse 04

100% COTTON POPLIN

TREVISO Long Sleeve Blouse 10 - 11

STRETCH COTTON BLEND

FRANCA Long Sleeve Blouse 12 - 13 - 14 - 15

COTTON RICH

PALENA Long Sleeve Blouse 18

PADULI Short Sleeve Blouse 20 - 21

PERANO Long Sleeve Blouse 22 - 23

PESCARA Short Sleeve Blouse 24

CAMPANIA Long Sleeve Blouse 27

LIGURIA Short Sleeve Blouse 28 - 29



designed to complement
OUR TAILORED RANGES

Designed to complement our tailored ranges, our collection of **beautifully made, contemporary business shirts and blouses** is perfect for the modern corporate environment.

The collection offers coordinating men's and women's shirts and blouses in a fantastic range of easy-care and easy-to-iron fabrics - both 100% superfine cotton and cotton-rich blends. **Classic and slim fit** options are available, as well as **short and long sleeves** and button fastening or double cuffs.

Brand new to the range is a selection of long sleeve, slim fit shirts and blouses in a polyester/cotton stretch fabric, available in 5 stunning colourways with contrasting white collar, also with contrasting cuffs on the blouses. These styles bring a whole new direction for modern corporate clothing and match our tailoring perfectly!

Also updated is our range of **100% superfine cotton shirts and blouses** with double cuffs. **Available in white or blue herringbone and in three brand new stripe designs**, this continues to be the range of choice for end users looking for premium shirts and blouses. For the first time we also have a **women's short sleeve version** available!

We strongly believe in **attention to detail** - that's why our designers create up to date styles with the look, fit, feel and performance you expect and can rely on.

All fabrics meet **Oeko-Tex Standard 100 environmental requirements**.

Above: Men's Mantova shirt & women's Liguria blouse.



100% SUPERFINE COTTON EASY-TO-IRON SHIRTS & BLOUSES

WOMEN'S VILLETA (Long Sleeve) OZZERO (Short Sleeve)

MEN'S ANDORA (Long Sleeve, Double Cuff)

- Matching long sleeve double cuff blouse (Villeta), shirt (Andora) & short sleeve blouse (Ozzero, White Herringbone & Blue Herringbone only)
- Men's extra long sleeve available (White Herringbone & Blue Herringbone only)
- Removable metal collar stiffeners (men's Andora) • Taped seams
- Tailored in 100% cotton, ideal for any modern business environment
- Easycare, Easy-to-iron & Machine washable • Complementary silk knots (Villeta & Andora)



B. Blue Herringbone



OZZERO Blouse
(Short sleeve, semi fitted)

Codes & Colours:
2249A White Herringbone
2249B Blue Herringbone

Sizes: 6 - 24 regular

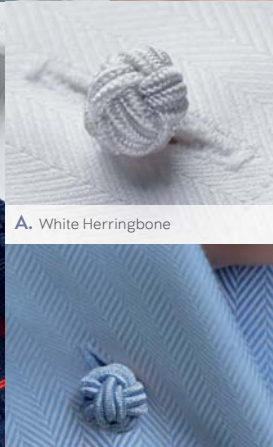
NEW
STYLES



A. White Herringbone



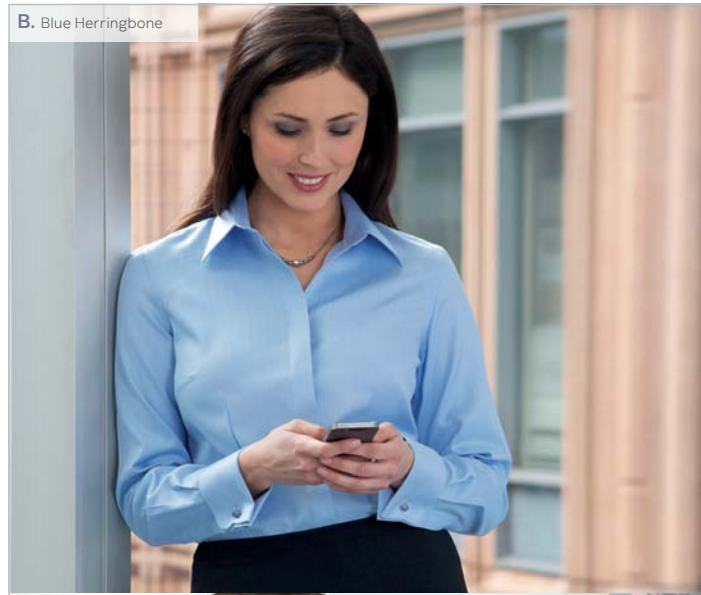
LONGER
SLEEVE
LENGTH
AVAILABLE



A. White Herringbone

B. Blue Herringbone

B. Blue Herringbone



VILLETA Blouse
(Long sleeve, semi fitted)

Codes & Colours:
2247A White Herringbone
2247B Blue Herringbone
2247C Charcoal/White Stripe
2247D Raspberry Stripe
2247E Pink/Grey Stripe

Sizes: 6 - 24 regular

ANDORA Shirt
(Long sleeve, classic fit, double cuff)

Codes & Colours:
7656A White Herringbone
7656AL White Herringbone
Extra long sleeve 36.5"
7656B Blue Herringbone
7656BL Blue Herringbone
Extra long sleeve 36.5"
7656C Charcoal/White Stripe
7656D Raspberry Stripe
7656E Pink/Grey Stripe

Sizes: 14.5" - 20"

* Extra long sleeve 36.5" at size 15.5"



D. Raspberry Stripe

NEW
FABRICS

100% SUPERFINE COTTON EASY-TO-IRON SHIRTS & BLOUSES *continued*
 WOMEN'S **VILLETA** (Long Sleeve) **OZZERO** (Short Sleeve)
 MEN'S **ANDORA** (Long Sleeve, Double Cuff)

- Matching long sleeve double cuff blouse (Villeta), shirt (Andora) & short sleeve blouse (Ozzero, White Herringbone & Blue Herringbone only)
- Men's extra long sleeve available (White Herringbone & Blue Herringbone only)
- Removable metal collar stiffeners (men's Andora) • Taped seams
- Tailored in 100% cotton, ideal for any modern business environment
- Easycare, Easy-to-iron & Machine washable • Complementary silk knots (Villeta & Andora)



E. Pink/Grey Stripe

**NEW
FABRICS**



VILLETA Blouse
(Long sleeve, semi fitted)

Codes & Colours:

- 2247A White Herringbone
- 2247B Blue Herringbone
- 2247C Charcoal/White Stripe
- 2247D Raspberry Stripe
- 2247E Pink/Grey Stripe

Sizes: 6 - 24 regular

ANDORA Shirt
(Long sleeve, classic fit, double cuff)

Codes & Colours:

- 7656A White Herringbone
- 7656AL White Herringbone Extra long sleeve 36.5"
- 7656B Blue Herringbone
- 7656BL Blue Herringbone Extra long sleeve 36.5"
- 7656C Charcoal/White Stripe
- 7656D Raspberry Stripe
- 7656E Pink/Grey Stripe

Sizes: 14.5" - 20"

* Extra long sleeve 36.5" at size 15.5"



E. Pink/Grey Stripe



C. Charcoal/White Stripe

**NEW
STYLES**



C. Charcoal/White Stripe



100% COTTON POPLIN EASY-TO-IRON SHIRTS & BLOUSE
MEN'S CHESTER (Long Sleeve, Double Cuff) & CHEADLE (Long Sleeve, Single Cuff)

- 100% Cotton • Long sleeve • Double cuff (Chester & Chelford)
- Single cuff & chest pocket (Cheadle) • Extra long sleeve available (Cheadle White only)
- Removable metal collar stiffeners • Taped seams
- Easycare, Easy-to-iron & Machine washable
- All match with Treviso women's blouse (on pages 10-11)



CHEADLE Shirt
 (Classic fit, single cuff, chest pocket)

Codes & Colours:

- 7641A White
- 7641AL White Extra long sleeve 36.5"
- 7641B Blue

Sizes: 14.5" - 20"

* Extra long sleeve 36.5" at size 15.5"



CHESTER Shirt
 (Classic fit, double cuff)

Codes & Colours:

- 7642A White
- 7642B Blue

Sizes: 14.5" - 20"



CHELFORD Shirt
 (Slim fit, double cuff, rear darts)

Codes & Colours:

- 7643A White
- 7643B Blue

Sizes: 14.5" - 18"



SLIM FIT 100% COTTON POPLIN EASY-TO-IRON SHIRTS
MEN'S CHELFORD (Long Sleeve, Double Cuff)

- 100% Cotton • Long sleeve • Slim fit, twin rear darts for a defined silhouette
- Double cuff (Chelford & Chester) • Removable metal collar stiffeners
- Taped seams • Easycare, easy-to-iron & Machine washable
- Coordinates with Treviso women's blouse (on pages 10-11)



100% COTTON POPLIN EASY-TO-IRON SHIRTS & BLOUSE *continued*
WOMEN'S TREVISO (Long sleeve)

- 100% Cotton • Long sleeve • Semi-fitted
- Single 3 button cuff • Classic button up collar
- Coordinates with Chester, Cheadle & Chelford men's shirts (on previous pages)
- Easycare, Easy-to-iron & Machine washable



COORDINATING
MEN'S &
WOMEN'S
STYLES

TREVISO Blouse
(Long sleeve, semi fitted)

Codes & Colours:

2244A White

2244B Blue

Sizes: 6 - 24 regular

CHESTER Shirt
(Classic fit, double cuff)

SEMI
fitted
3 BUTTON
CUFF



SEMI
fitted
3 BUTTON
CUFF



SLIM FIT STRETCH FABRIC EASY-TO-IRON SHIRTS & BLOUSES
WOMEN'S FRANCA (Long sleeve) / MEN'S LUCCA (Long sleeve)

- 57% Polyester / 39% Cotton / 4% Elastane • Slim fit • Long sleeve
- Contrast white rounded collar and contrast white single button cuff (Franca)
- Fly front (Franca) • Contrast white collar with single 2 button cuff (Lucca)
- Twin rear darts for defined silhouette
- Easycare, Easy-to-iron & Machine washable



FRANCA Blouse
(Long sleeve, semi fitted)

- Codes & Colours:**
- 2251A White with front panel design (Franca only)
 - 2251B Sky Blue
 - 2251C Blue stripe
 - 2251D Lilac stripe
 - 2251E Red stripe

Sizes: 6 - 24 regular

LUCCA Shirt
(Long sleeve, slim fit)

- Codes & Colours:**
- 7658B Sky Blue
 - 7658C Blue stripe
 - 7658D Lilac stripe
 - 7658E Red stripe

Sizes: 14.5" - 18"



SLIM fit
PANEL FRONT

NEW STYLES

A. White with front panel design

B. Sky Blue



SLIM fit
CONTRAST COLLAR

BEAUTIFUL NEW FABRICS



B. Sky Blue



SLIM fit
CONTRAST COLLAR

C. Blue stripe

FRANCA Blouse
(Long sleeve, semi fitted)
Codes & Colours:
2251A White with front panel design
2251B Sky Blue
2251C Blue stripe
2251D Lilac stripe
2251E Red stripe
Sizes: 6 - 24 regular

LUCCA Shirt
(Long sleeve, slim fit)
Codes & Colours:
7658B Sky Blue
7658C Blue stripe
7658D Lilac stripe
7658E Red stripe
Sizes: 14,5" - 18"

NEW STYLES

C. Blue stripe

STRETCH FABRICS

E. Red stripe

E. Red stripe

D. Lilac stripe

D. Lilac stripe

SLIM FIT STRETCH FABRIC EASY-TO-IRON SHIRTS & BLOUSES continued
WOMEN'S FRANCA (Long sleeve) / **MEN'S LUCCA** (Long sleeve)

- 57% Polyester / 39% Cotton / 4% Elastane
- Slim fit
- Long sleeve
- Contrast white rounded collar and contrast white single button cuff (Franca)
- Fly front (Franca)
- Contrast white collar with single 2 button cuff (Lucca)
- Twin rear darts for defined silhouette
- Easycare, Easy-to-iron & Machine washable



COTTON RICH EASY-TO-IRON SHIRTS & BLOUSES

MEN'S ALBA (Slim fit)

- Cotton-rich • 55% Cotton / 45% Polyester
- Effortlessly stylish, Slim fit, twin rear darts for a defined silhouette
- Semi cutaway collar to look fantastic with or without a tie, long sleeve, single 2 button cuff
- Matches men's Rapino & Rosello and women's Palena & Paduli (on pages 18, 19, 20 & 21)
- Easycare, easy-to-iron & Machine washable



ALBA Shirt
(Long sleeve, slim fit)

Codes & Colours:
7640A White

Sizes: 14.5" - 18"



A. White



COTTON RICH EASY-TO-IRON SHIRTS & BLOUSES continued
WOMEN'S PALENA (Long sleeve) / MEN'S RAPINO (Long sleeve)

- Cotton-rich • 55% Cotton / 45% Polyester
- Specifically designed for fit, comfort and style with long sleeve (Palena)
- Effortlessly stylish classic fit, long sleeve, single cuff and chest pocket (Rapino)
- Coordinates with men's Alba slim fit shirt (on pages 16-17) and Rosello & Paduli (on pages 20-21)
- Easycare, Easy-to-iron & Machine washable



PALENA Blouse
 (Long sleeve, semi fitted)

Codes & Colours:

- 2214A White
- 2214B Pink
- 2214D Black
- 2214E Blue

Sizes: 6 - 24 regular



B. Pink



D. Black

EFFORTLESSLY
Stylish



A. White

RAPINO Shirt
 (Long sleeve, classic fit)

Codes & Colours:

- 7539A White
- 7539B Pink
- 7539D Black
- 7539E Blue

Sizes: 14.5" - 20"

CLASSIC
fit
 SINGLE CUFF

IMPROVED
BLUE
 COLOURWAY



E. Blue



COTTON RICH EASY-TO-IRON SHIRTS & BLOUSES *continued*
WOMEN'S PADULI (Short sleeve) / **MEN'S ROSELLO** (Short sleeve)

- Cotton-rich • 55% Cotton / 45% Polyester
- Short sleeve classic fit shirt with chest pocket • Short sleeve blouse with adjustable cuff
- A smart choice for the modern businessman or woman
- Coordinates with men's Alba slim fit shirt (on pages 16-17) and Rapino & Palena (on pages 18-19)
- Easycare, Easy-to-iron & Machine washable



PADULI Blouse
 (Short sleeve, semi fitted)

Codes & Colours:

- 2216A White
- 2216B Pink
- 2216D Black
- 2216E Blue

Sizes: 6 - 24 regular

ROSELLO Shirt

(Short sleeve, classic fit)

Codes & Colours:

- 7541A White
- 7541B Pink
- 7541D Black
- 7541E Blue

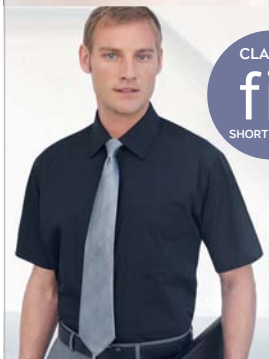
Sizes: 14.5" - 20"



SHORT SLEEVE
Adjustable cuff



PADULI adjustable cuff detail

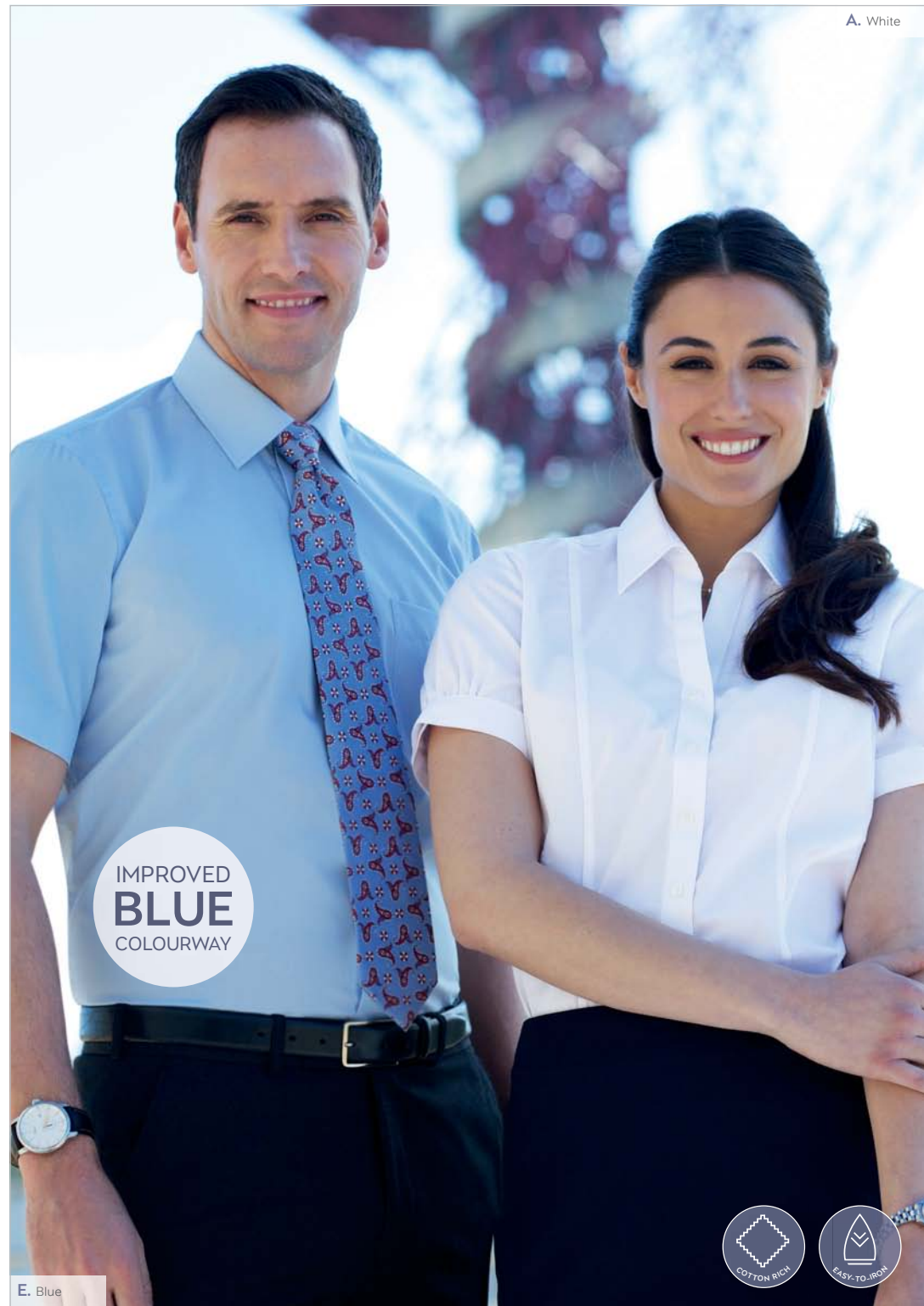


CLASSIC
fit
 SHORT SLEEVE

D. Black

B. Pink

A. White



IMPROVED
BLUE
 COLOURWAY



E. Blue

COTTON RICH EASY-TO-IRON SHIRTS & BLOUSES
WOMEN'S PERANO (Long sleeve) / MEN'S RUFINA (Long sleeve)

- Cotton-rich • 60% Cotton / 40% Polyester
- Specifically designed for fit, comfort and style with long sleeve (Perano)
- Effortlessly stylish classic fit, long sleeve, single cuff and chest pocket (Rufina)
- Matches men's Roccella and women's Pescara (on pages 24-25)
- Easycare, Easy-to-iron & Machine washable



PERANO Blouse
 (Long sleeve, semi fitted)
Codes & Colours:
 2215A White/Grey Stripe
 2215B Pink/Grey Stripe
 2215C Blue/White Stripe

Sizes: 6 - 24 regular

RUFINA Shirt
 (Long sleeve, classic fit)
Codes & Colours:
 7540A White/Grey Stripe
 7540B Pink/Grey Stripe
 7540C Blue/White Stripe

Sizes: 14.5" - 20"

SEMI
fitted
 SINGLE CUFF

BEAUTIFUL
STRIPED
 DESIGNS

B. Pink/Grey Stripe

A. White/Grey Stripe



COORDINATING
**MEN'S &
 WOMEN'S**
 STYLES



C. Blue/White Stripe



A. White/Grey Stripe

B. Pink/Grey Stripe



C. Blue/White Stripe



SHORT SLEEVE
Adjustable
cuff

PESCARA Blouse
(Short sleeve, semi fitted)
Codes & Colours:
2217A White/Grey Stripe
2217B Pink/Grey Stripe
2217C Blue/White Stripe

Sizes: 6 - 24 regular

ROCCELLA Shirt
(Short sleeve, classic fit)

Codes & Colours:
7542A White/Grey Stripe
7542B Pink/Grey Stripe
7542C Blue/White Stripe

Sizes: 14.5" - 20"



C. Blue/White Stripe



C. Blue/White Stripe



B. Pink/Grey Stripe



A. White/Grey Stripe

B. Pink/Grey Stripe



CLASSIC
fit
SHIRT

COTTON RICH EASY-TO-IRON SHIRTS & BLOUSES
WOMEN'S **PESCARA** (Short sleeve) / MEN'S **ROCCELLA** (Short sleeve)

- Cotton-rich • 60% Cotton / 40% Polyester
- Short sleeve classic fit shirt with chest pocket • Short sleeve blouse with adjustable cuff
- A smart choice for the modern businessman or woman
- Matches men's Rufina and women's Perano (on pages 22-23)
- Easycare, Easy-to-iron & Machine washable



COTTON RICH EASY-TO-IRON SHIRTS & BLOUSES
MEN'S MANTOVA (Long sleeve) / WOMEN'S CAMPANIA (Long sleeve)

- Cotton-rich long sleeve shirts • 55% Cotton / 45% Polyester
- Flattering fit, casually stylish, matches men's Savona and women's Liguria shirts
- Contrast inner collar and cuff, double button fastening
- Easycare, Easy-to-iron & Machine washable



MANTOVA Shirt
(Long sleeve, classic fit)

Codes & Colours:

- 7594A White
- 7594B Sky Blue/Magenta Stripe
- 7594C Black/White Stripe

Sizes: 14.5" - 20"

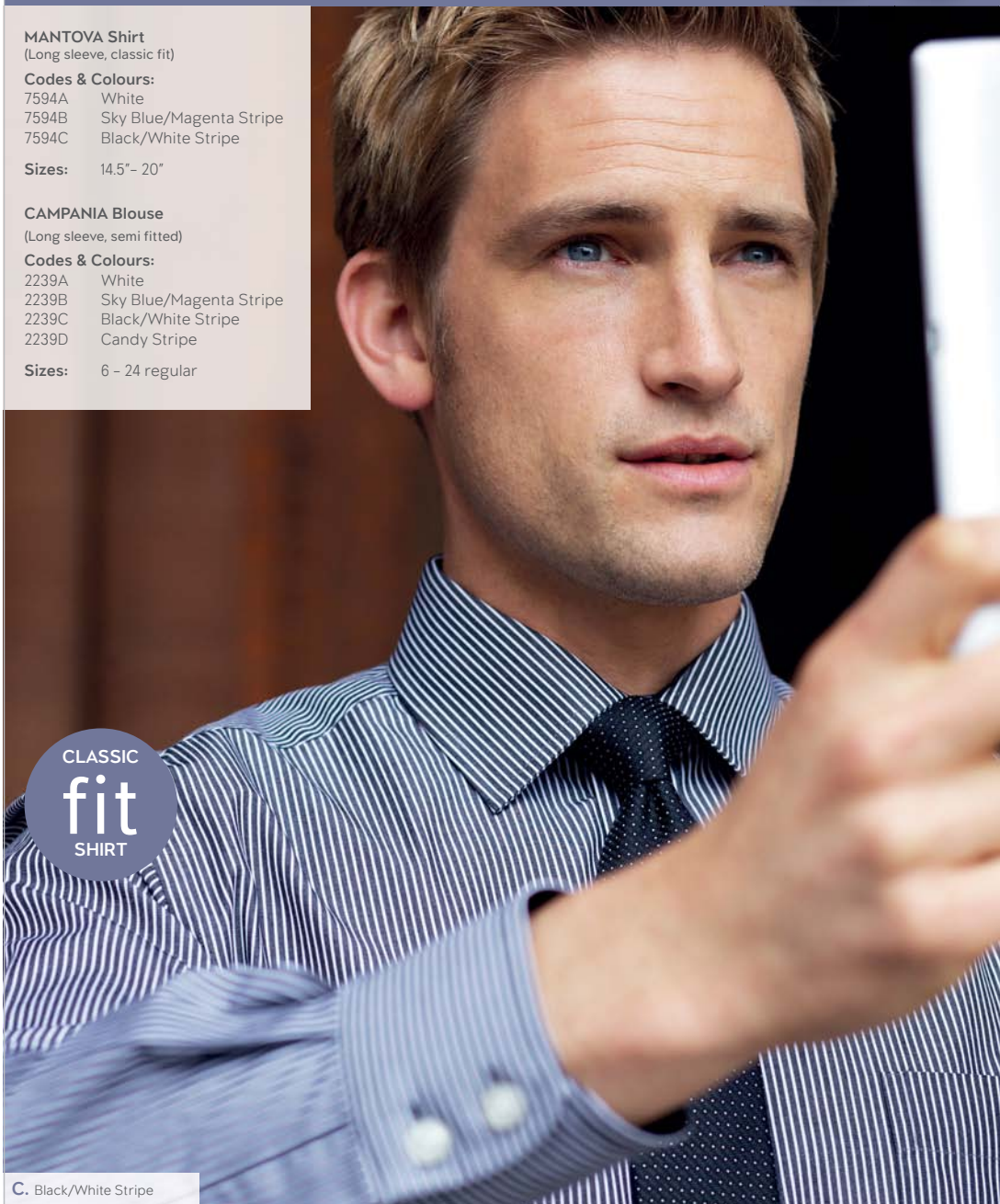
CAMPANIA Blouse

(Long sleeve, semi fitted)

Codes & Colours:

- 2239A White
- 2239B Sky Blue/Magenta Stripe
- 2239C Black/White Stripe
- 2239D Candy Stripe

Sizes: 6 - 24 regular



C. Black/White Stripe

B. Sky Blue/Magenta Stripe



COORDINATING
**MEN'S &
 WOMEN'S
 STYLES**



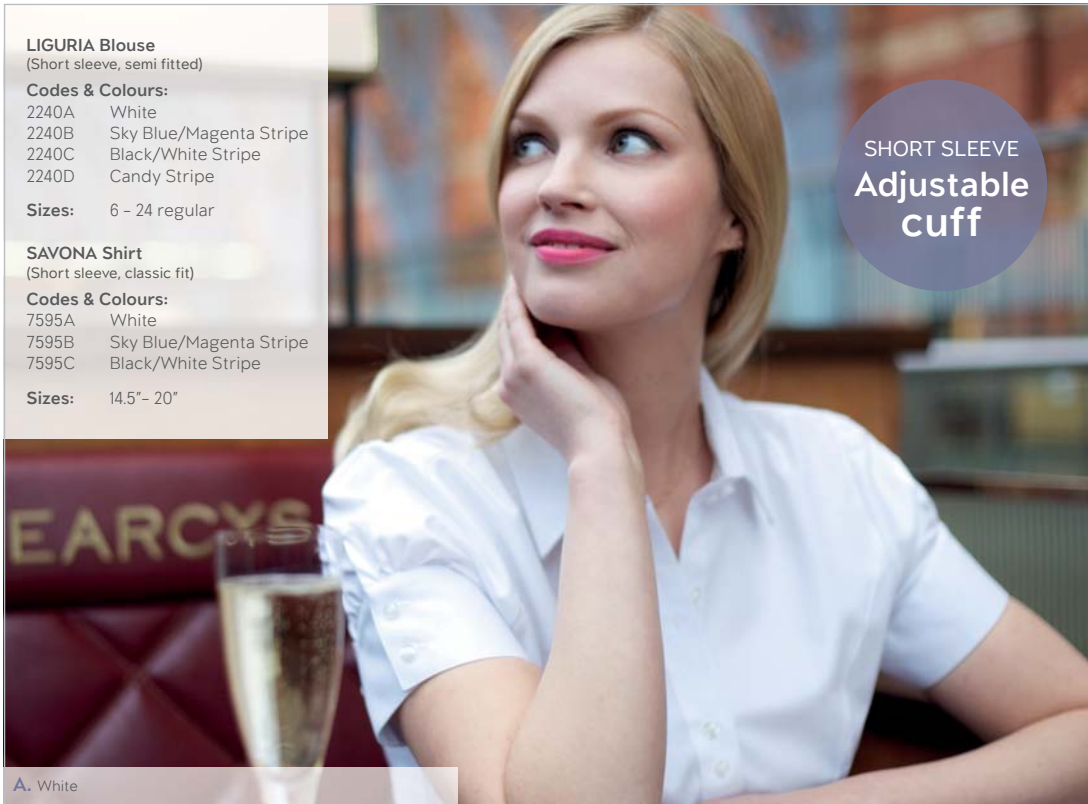
A. White

B. Sky Blue/Magenta Stripe

A. White

C. Black/White Stripe

D. Candy Stripe (Campania only)



A. White



C. Black/White Stripe



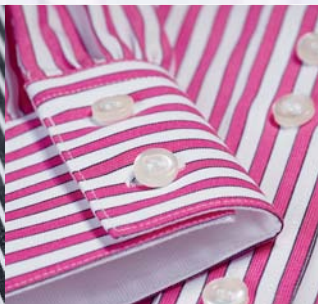
A. White



B. Sky Blue/Magenta Stripe



C. Black/White Stripe



D. Candy Stripe (Liguria only)

LIGURIA Blouse
(Short sleeve, semi fitted)

Codes & Colours:
2240A White
2240B Sky Blue/Magenta Stripe
2240C Black/White Stripe
2240D Candy Stripe

Sizes: 6 - 24 regular

SAVONA Shirt
(Short sleeve, classic fit)

Codes & Colours:
7595A White
7595B Sky Blue/Magenta Stripe
7595C Black/White Stripe

Sizes: 14.5" - 20"

D. Candy Stripe (Liguria only)



COTTON RICH EASY-TO-IRON SHIRTS & BLOUSES
WOMEN'S **LIGURIA** (Short sleeve) / MEN'S **SAVONA** (Short sleeve)

- Cotton-rich short sleeve shirts • 55% Cotton, 45% Polyester
- Casually stylish, matches women's Campania and men's Mantova shirts
- Easy-care, Easy-to-iron & Machine washable



SHIRT & BLOUSE

collection

